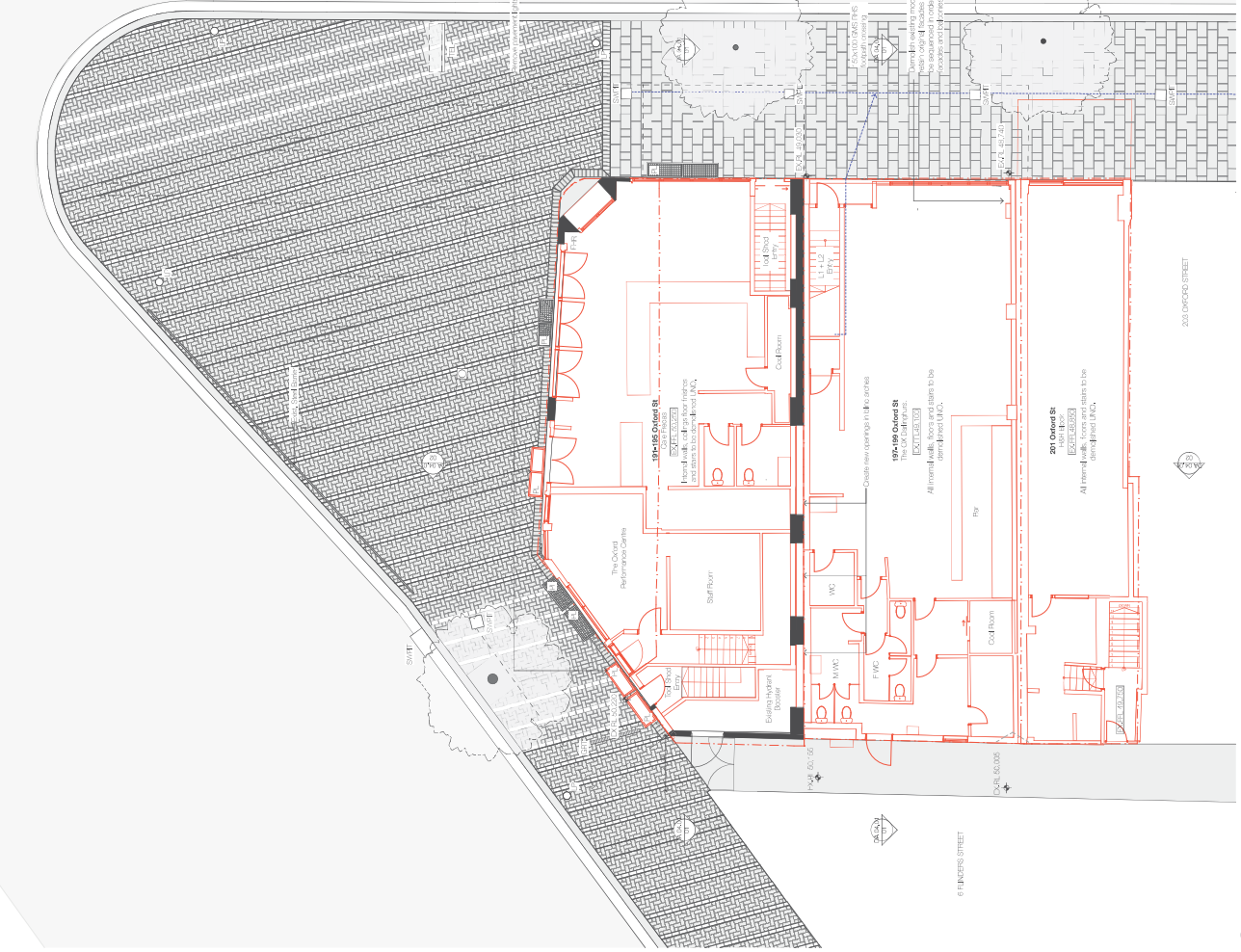
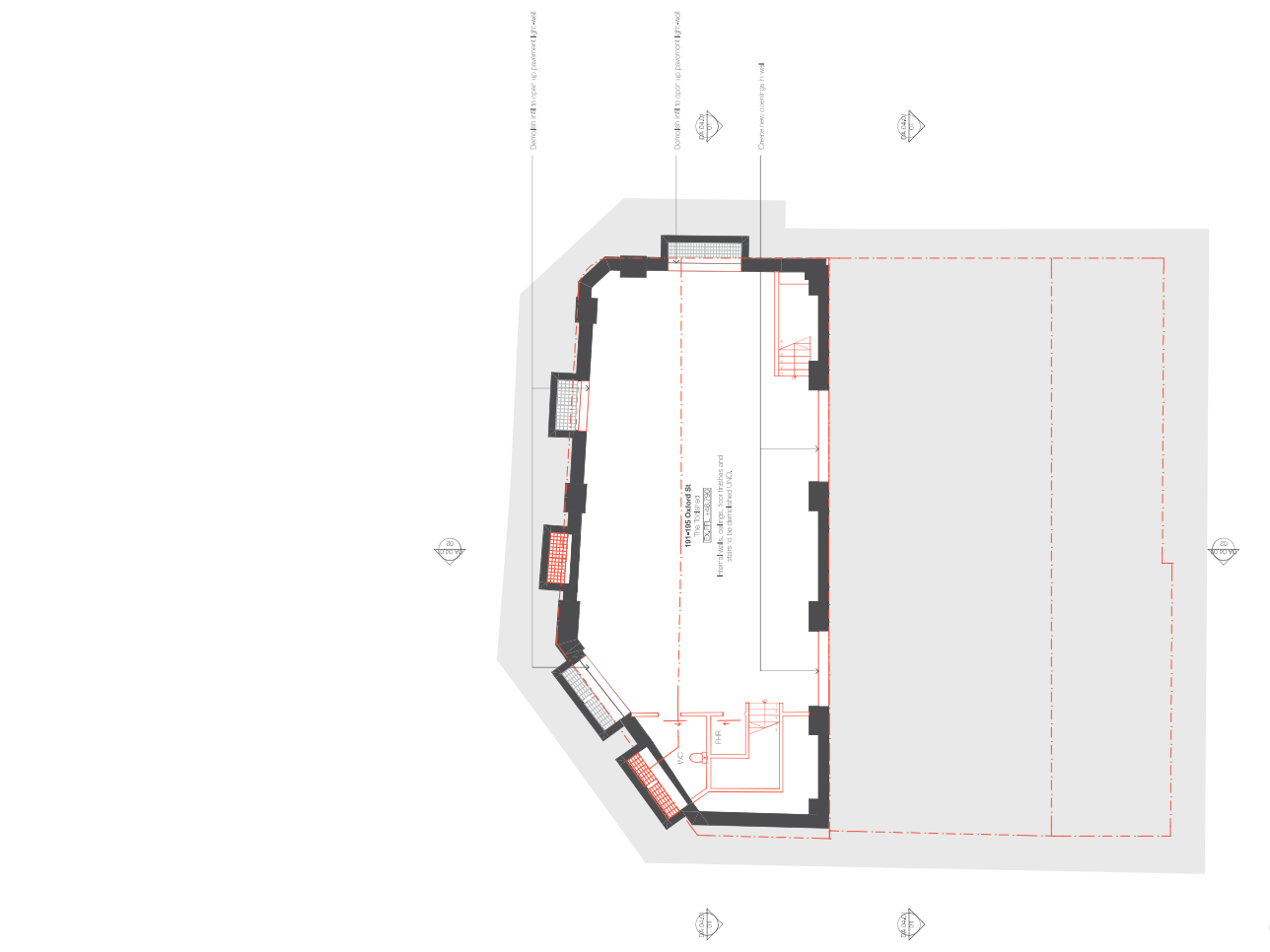


Attachment A1

Selected Drawings



2 level 1 (Ground)
 1:100



Basement
 1:100

ISSUE	DATE	BY	CHECKED BY
01	7/14/22	DM:ELLE	DM:ELLE

NO	REV	DATE	DESCRIPTION
DA 02.07	01		DEMOLITION BASEMENT - GROUND FLOOR

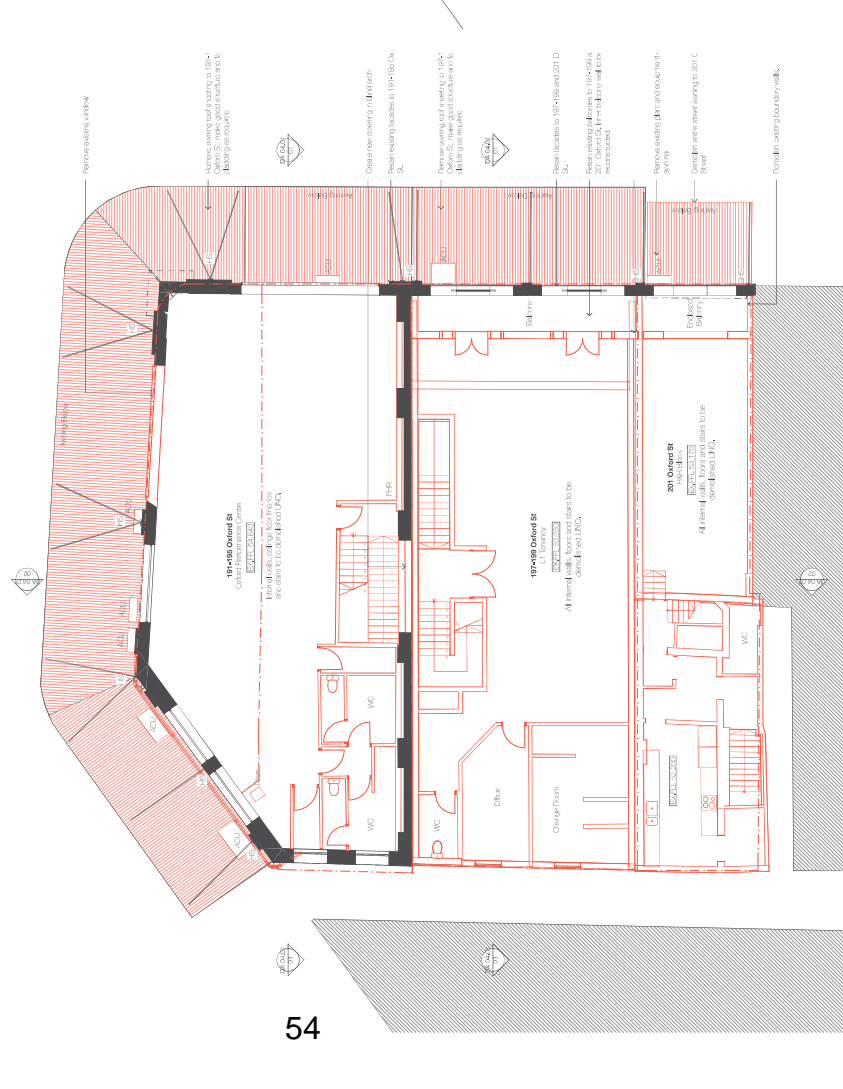
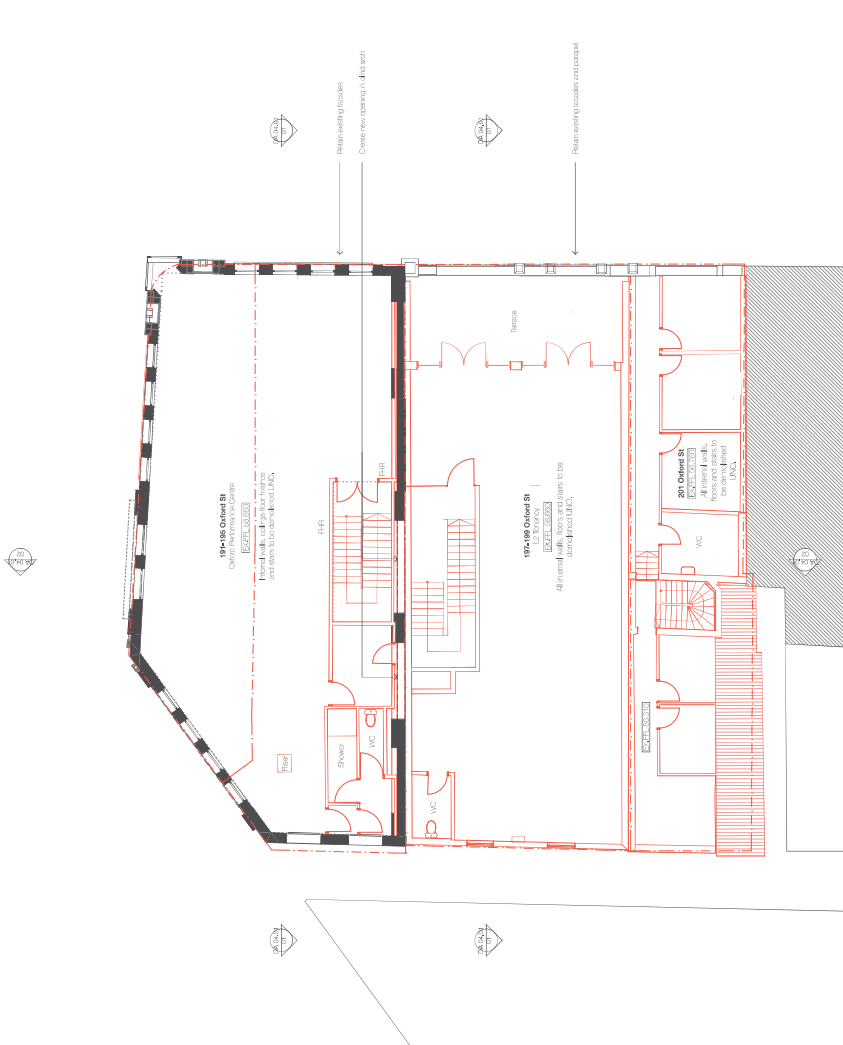
NO	REV	DATE	DESCRIPTION
1100	01	11/08/2021	SCALE
			1:100 @A1
			DATE
			7/14/22

NO	REV	DATE	DESCRIPTION
			19-195, 197-199, 201 Oxford St, Darlinghurst NSW, 2010
			RE-SCOPE THE ROBBOTS

NO	REV	DATE	DESCRIPTION
			197-199 Oxford St This level is to be level 197-199 Oxford St. All structural walls, doors and stairs to be shown level 197-199.
			199-201 Oxford St This level is to be level 199-201 Oxford St. All structural walls, doors and stairs to be shown level 199-201.
			201 Oxford St This level is to be level 201 Oxford St. All structural walls, doors and stairs to be shown level 201.

NO	REV	DATE	DESCRIPTION
			197-199 Oxford St This level is to be level 197-199 Oxford St. All structural walls, doors and stairs to be shown level 197-199.
			199-201 Oxford St This level is to be level 199-201 Oxford St. All structural walls, doors and stairs to be shown level 199-201.
			201 Oxford St This level is to be level 201 Oxford St. All structural walls, doors and stairs to be shown level 201.

NO	REV	DATE	DESCRIPTION
			197-199 Oxford St This level is to be level 197-199 Oxford St. All structural walls, doors and stairs to be shown level 197-199.
			199-201 Oxford St This level is to be level 199-201 Oxford St. All structural walls, doors and stairs to be shown level 199-201.
			201 Oxford St This level is to be level 201 Oxford St. All structural walls, doors and stairs to be shown level 201.



REVISIONS

NO	DATE	BY	DESCRIPTION
01	7/4/22	DA	DATE

REVISIONS

NO	DATE	BY	DESCRIPTION
01	7/4/22	DA	DATE

REVISIONS

NO	DATE	BY	DESCRIPTION
01	7/4/22	DA	DATE

Taylor Square
 197-199, 197-199, 201 Oxford St, Darlinghurst NSW, 2010
 PROJECT NO: 197-199, 201 OXFORD ST
 DRAWN BY: DA
 CHECKED BY: DA
 DATE: 7/4/22

NEESON MURCUTT + NEILLE
 NEESON MURCUTT ARCHITECTS PTY LTD
 1119 KINGSWAY, SYDNEY NSW 1585
 PHONE: (02) 9550 6600
 FAX: (02) 9550 6601
 EMAIL: info@neesonm.com.au
 WEBSITE: www.neesonm.com.au

Copyright in all documents and drawings prepared by NEESON MURCUTT ARCHITECTS or in any work executed from those documents and drawings shall remain the property of or be controlled by NEESON MURCUTT ARCHITECTS PTY LTD

Taylor Square
 197-199, 197-199, 201 Oxford St, Darlinghurst NSW, 2010
 PROJECT NO: 197-199, 201 OXFORD ST
 DRAWN BY: DA
 CHECKED BY: DA
 DATE: 7/4/22

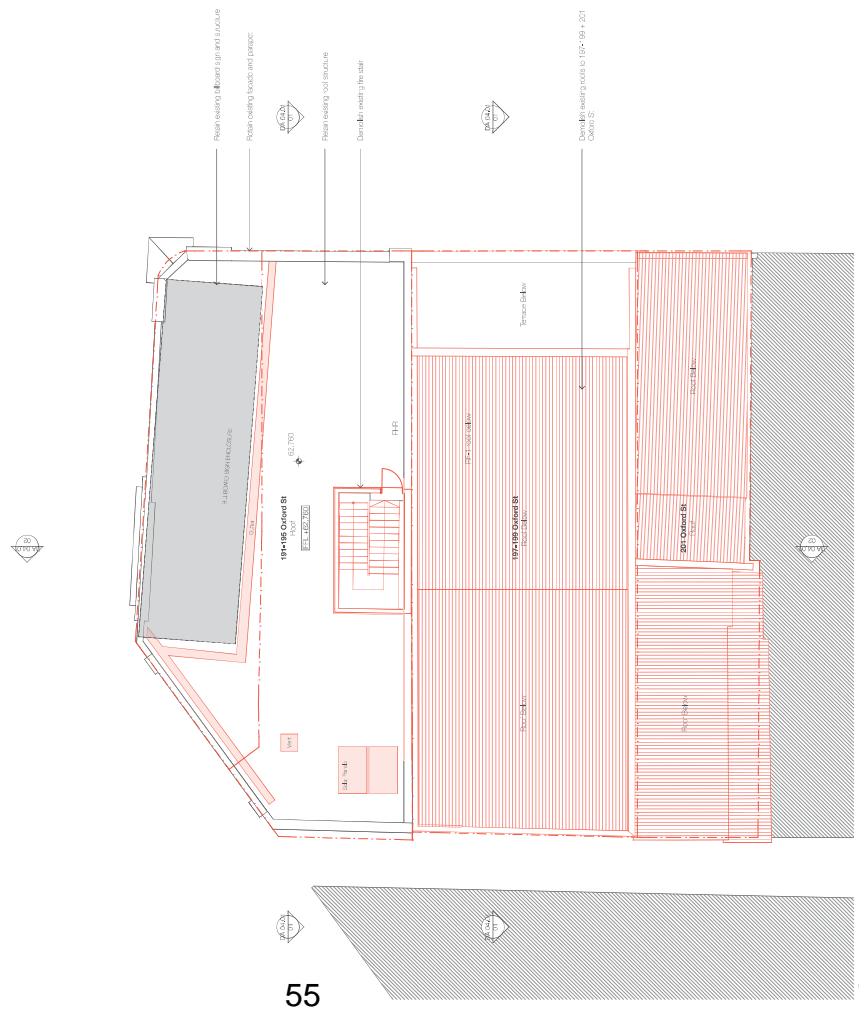
NEESON MURCUTT + NEILLE
 NEESON MURCUTT ARCHITECTS PTY LTD
 1119 KINGSWAY, SYDNEY NSW 1585
 PHONE: (02) 9550 6600
 FAX: (02) 9550 6601
 EMAIL: info@neesonm.com.au
 WEBSITE: www.neesonm.com.au

Copyright in all documents and drawings prepared by NEESON MURCUTT ARCHITECTS or in any work executed from those documents and drawings shall remain the property of or be controlled by NEESON MURCUTT ARCHITECTS PTY LTD

Taylor Square
 197-199, 197-199, 201 Oxford St, Darlinghurst NSW, 2010
 PROJECT NO: 197-199, 201 OXFORD ST
 DRAWN BY: DA
 CHECKED BY: DA
 DATE: 7/4/22

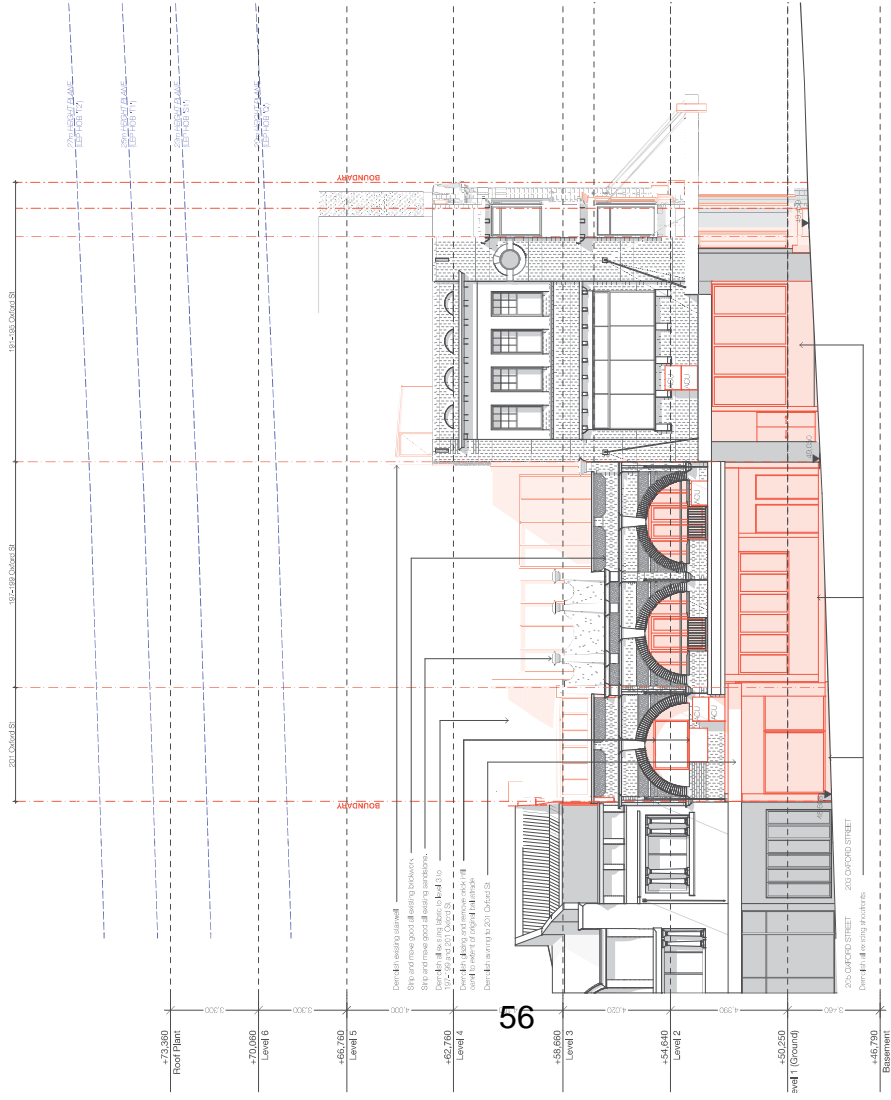
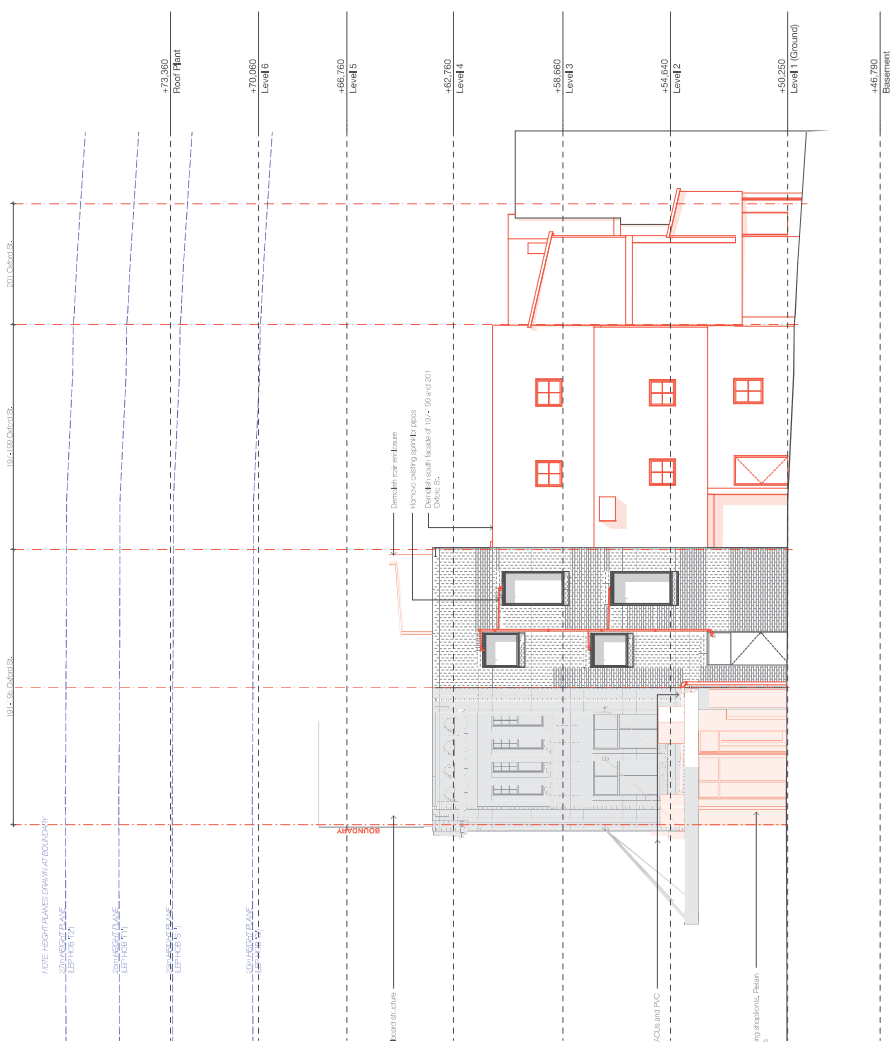
NEESON MURCUTT + NEILLE
 NEESON MURCUTT ARCHITECTS PTY LTD
 1119 KINGSWAY, SYDNEY NSW 1585
 PHONE: (02) 9550 6600
 FAX: (02) 9550 6601
 EMAIL: info@neesonm.com.au
 WEBSITE: www.neesonm.com.au

Copyright in all documents and drawings prepared by NEESON MURCUTT ARCHITECTS or in any work executed from those documents and drawings shall remain the property of or be controlled by NEESON MURCUTT ARCHITECTS PTY LTD



55

Roof
1:100



2 South
1/100

1 North
1/100

NEESON MURCUTT + NEILLE
 NEESON MURCUTT ARCHITECTS PTY LTD
 11 9 ROBIN HART PATH 2011 T 6203 970
 100 MARKED ARCHITECT ARCHITECTURE NO. 602

DA 02.10.01 DEMOLITION ELEVATIONS - NORTH + SOUTH
 11/00 @A1
 7/14/22

DATE: 7/14/22
 DRAWN BY: DA
 CHECKED BY: NE
 SCALE: 11/00 @A1

Copyright in all documents and drawings prepared by NEESON MURCUTT ARCHITECTS and in any work executed from those documents and drawings shall remain the property of, or an creation vest in NEESON MURCUTT ARCHITECTS PTY LTD

REVISIONS

NO	DATE	DESCRIPTION
01	7/14/22	DATE

LEGEND

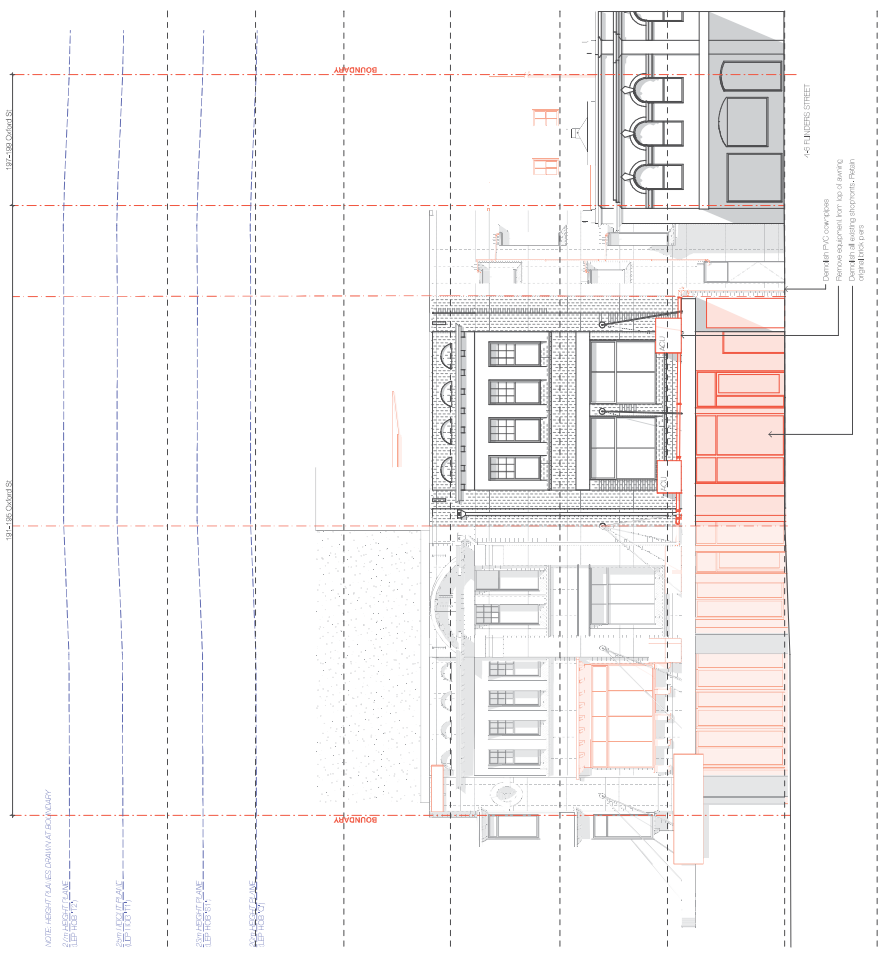
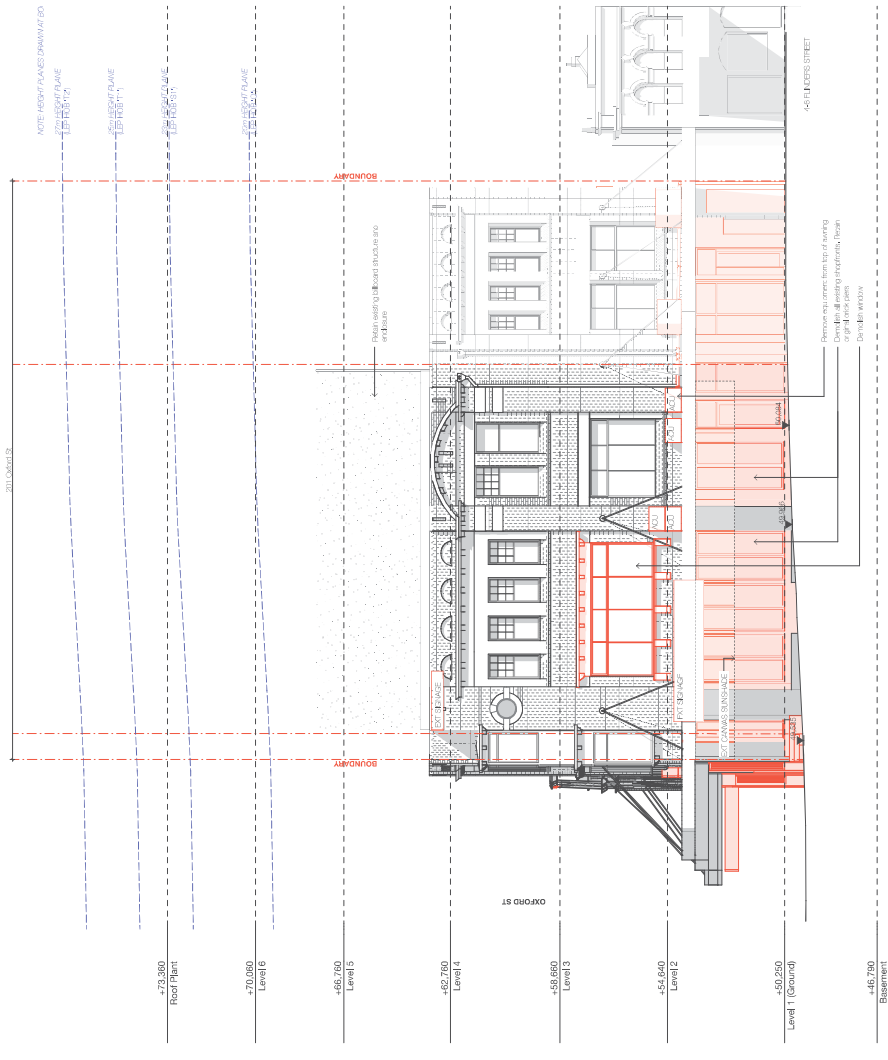
SYMBOL	DESCRIPTION
(Solid black)	EXISTING CONCRETE
(Dotted)	EXISTING BRICKWORK
(Hatched)	EXISTING ROOF
(Red outline)	DEMOLITION
(Blue outline)	NEW CONSTRUCTION

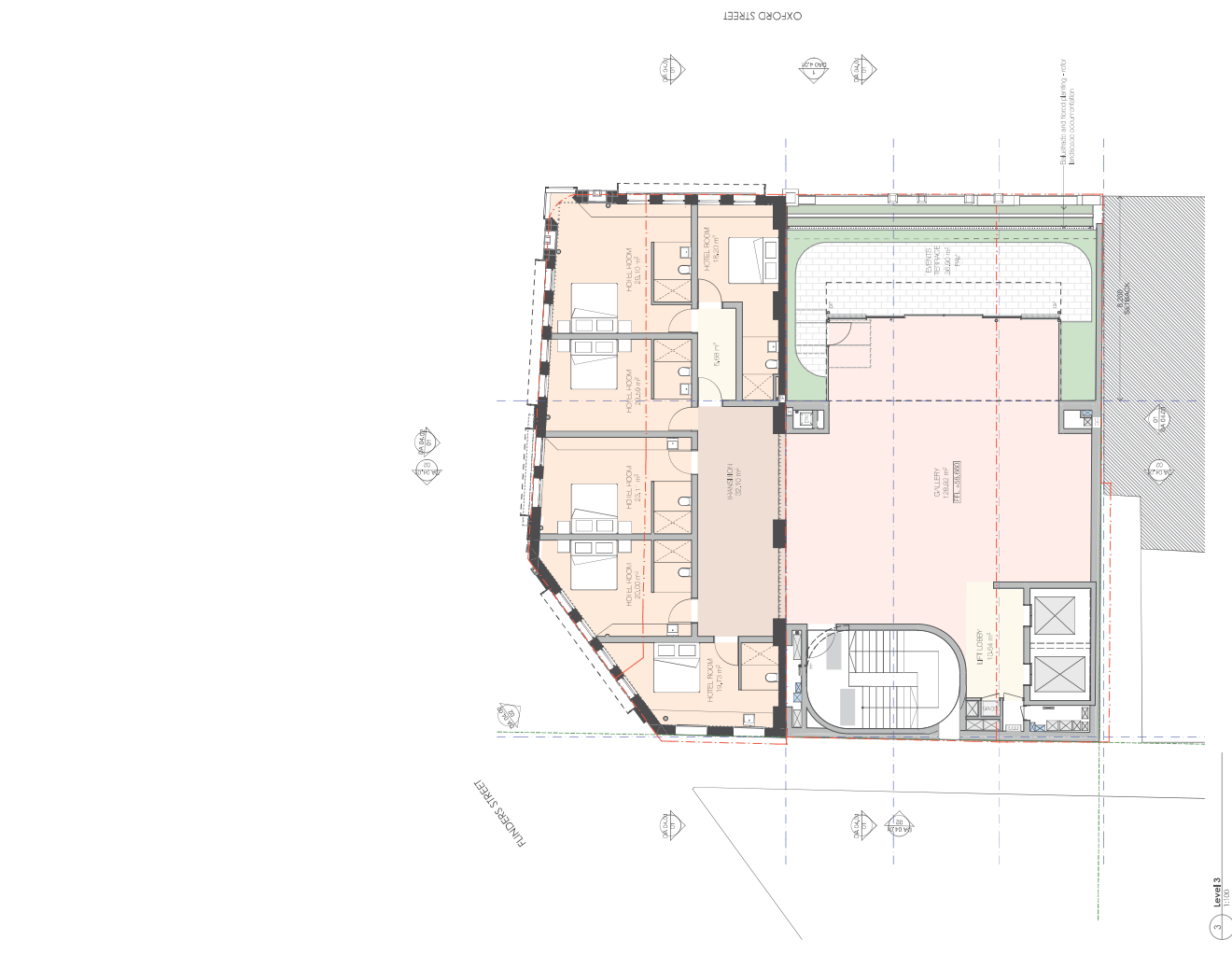
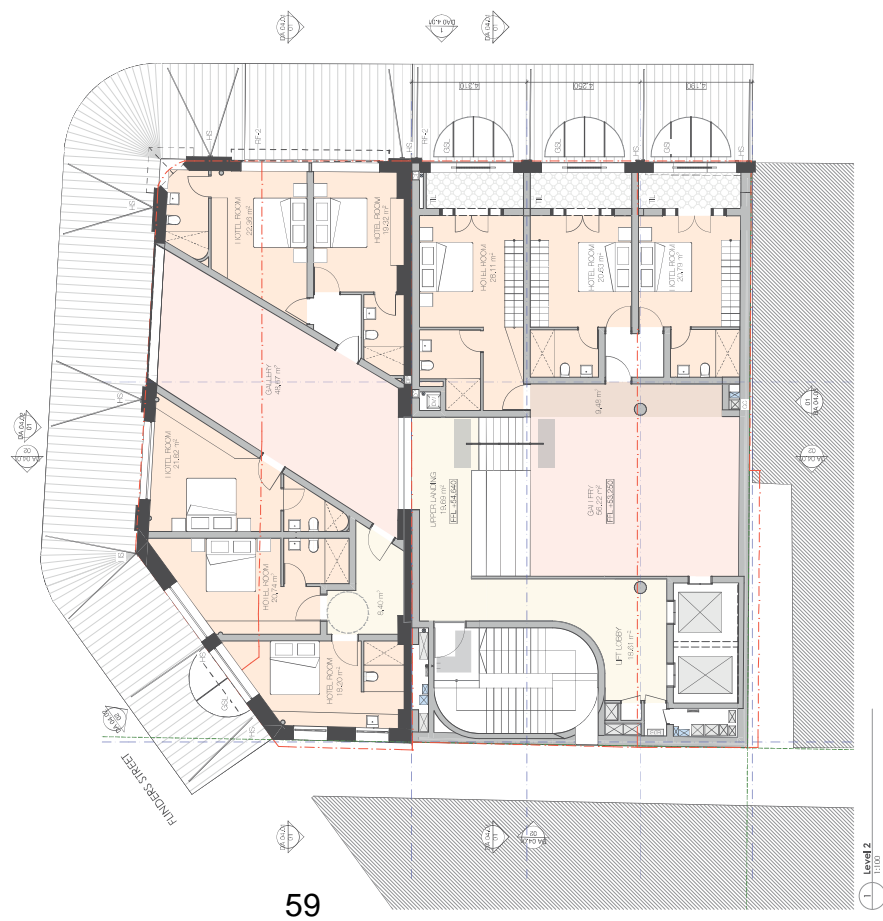
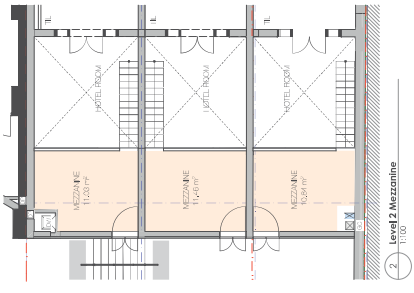
NOTES

1. DEMOLITION OF EXISTING BUILDING TO BE REPLACED BY NEW CONSTRUCTION.
2. ALL EXISTING CONCRETE TO BE DEMOLISHED AND REPLACED BY NEW CONCRETE.
3. ALL EXISTING BRICKWORK TO BE DEMOLISHED AND REPLACED BY NEW BRICKWORK.
4. ALL EXISTING ROOF TO BE DEMOLISHED AND REPLACED BY NEW ROOF.
5. ALL EXISTING SERVICES TO BE DEMOLISHED AND REPLACED BY NEW SERVICES.
6. ALL EXISTING STRUCTURE TO BE DEMOLISHED AND REPLACED BY NEW STRUCTURE.
7. ALL EXISTING FINISHES TO BE DEMOLISHED AND REPLACED BY NEW FINISHES.
8. ALL EXISTING LANDSCAPE TO BE DEMOLISHED AND REPLACED BY NEW LANDSCAPE.
9. ALL EXISTING UTILITIES TO BE DEMOLISHED AND REPLACED BY NEW UTILITIES.
10. ALL EXISTING SIGNAGE TO BE DEMOLISHED AND REPLACED BY NEW SIGNAGE.

NOTES

1. DEMOLITION OF EXISTING BUILDING TO BE REPLACED BY NEW CONSTRUCTION.
2. ALL EXISTING CONCRETE TO BE DEMOLISHED AND REPLACED BY NEW CONCRETE.
3. ALL EXISTING BRICKWORK TO BE DEMOLISHED AND REPLACED BY NEW BRICKWORK.
4. ALL EXISTING ROOF TO BE DEMOLISHED AND REPLACED BY NEW ROOF.
5. ALL EXISTING SERVICES TO BE DEMOLISHED AND REPLACED BY NEW SERVICES.
6. ALL EXISTING STRUCTURE TO BE DEMOLISHED AND REPLACED BY NEW STRUCTURE.
7. ALL EXISTING FINISHES TO BE DEMOLISHED AND REPLACED BY NEW FINISHES.
8. ALL EXISTING LANDSCAPE TO BE DEMOLISHED AND REPLACED BY NEW LANDSCAPE.
9. ALL EXISTING UTILITIES TO BE DEMOLISHED AND REPLACED BY NEW UTILITIES.
10. ALL EXISTING SIGNAGE TO BE DEMOLISHED AND REPLACED BY NEW SIGNAGE.





USING

1	MEZZANINE
2	HOTEL ROOM
3	HOTEL ROOM
4	HOTEL ROOM
5	HOTEL ROOM
6	HOTEL ROOM
7	HOTEL ROOM
8	HOTEL ROOM
9	HOTEL ROOM
10	HOTEL ROOM
11	HOTEL ROOM
12	HOTEL ROOM
13	HOTEL ROOM
14	HOTEL ROOM
15	HOTEL ROOM
16	HOTEL ROOM
17	HOTEL ROOM
18	HOTEL ROOM
19	HOTEL ROOM
20	HOTEL ROOM
21	HOTEL ROOM
22	HOTEL ROOM
23	HOTEL ROOM
24	HOTEL ROOM
25	HOTEL ROOM
26	HOTEL ROOM
27	HOTEL ROOM
28	HOTEL ROOM
29	HOTEL ROOM
30	HOTEL ROOM
31	HOTEL ROOM
32	HOTEL ROOM
33	HOTEL ROOM
34	HOTEL ROOM
35	HOTEL ROOM
36	HOTEL ROOM
37	HOTEL ROOM
38	HOTEL ROOM
39	HOTEL ROOM
40	HOTEL ROOM
41	HOTEL ROOM
42	HOTEL ROOM
43	HOTEL ROOM
44	HOTEL ROOM
45	HOTEL ROOM
46	HOTEL ROOM
47	HOTEL ROOM
48	HOTEL ROOM
49	HOTEL ROOM
50	HOTEL ROOM
51	HOTEL ROOM
52	HOTEL ROOM
53	HOTEL ROOM
54	HOTEL ROOM
55	HOTEL ROOM
56	HOTEL ROOM
57	HOTEL ROOM
58	HOTEL ROOM
59	HOTEL ROOM
60	HOTEL ROOM
61	HOTEL ROOM
62	HOTEL ROOM
63	HOTEL ROOM
64	HOTEL ROOM
65	HOTEL ROOM
66	HOTEL ROOM
67	HOTEL ROOM
68	HOTEL ROOM
69	HOTEL ROOM
70	HOTEL ROOM
71	HOTEL ROOM
72	HOTEL ROOM
73	HOTEL ROOM
74	HOTEL ROOM
75	HOTEL ROOM
76	HOTEL ROOM
77	HOTEL ROOM
78	HOTEL ROOM
79	HOTEL ROOM
80	HOTEL ROOM
81	HOTEL ROOM
82	HOTEL ROOM
83	HOTEL ROOM
84	HOTEL ROOM
85	HOTEL ROOM
86	HOTEL ROOM
87	HOTEL ROOM
88	HOTEL ROOM
89	HOTEL ROOM
90	HOTEL ROOM
91	HOTEL ROOM
92	HOTEL ROOM
93	HOTEL ROOM
94	HOTEL ROOM
95	HOTEL ROOM
96	HOTEL ROOM
97	HOTEL ROOM
98	HOTEL ROOM
99	HOTEL ROOM
100	HOTEL ROOM

USING

1	MEZZANINE
2	HOTEL ROOM
3	HOTEL ROOM
4	HOTEL ROOM
5	HOTEL ROOM
6	HOTEL ROOM
7	HOTEL ROOM
8	HOTEL ROOM
9	HOTEL ROOM
10	HOTEL ROOM
11	HOTEL ROOM
12	HOTEL ROOM
13	HOTEL ROOM
14	HOTEL ROOM
15	HOTEL ROOM
16	HOTEL ROOM
17	HOTEL ROOM
18	HOTEL ROOM
19	HOTEL ROOM
20	HOTEL ROOM
21	HOTEL ROOM
22	HOTEL ROOM
23	HOTEL ROOM
24	HOTEL ROOM
25	HOTEL ROOM
26	HOTEL ROOM
27	HOTEL ROOM
28	HOTEL ROOM
29	HOTEL ROOM
30	HOTEL ROOM
31	HOTEL ROOM
32	HOTEL ROOM
33	HOTEL ROOM
34	HOTEL ROOM
35	HOTEL ROOM
36	HOTEL ROOM
37	HOTEL ROOM
38	HOTEL ROOM
39	HOTEL ROOM
40	HOTEL ROOM
41	HOTEL ROOM
42	HOTEL ROOM
43	HOTEL ROOM
44	HOTEL ROOM
45	HOTEL ROOM
46	HOTEL ROOM
47	HOTEL ROOM
48	HOTEL ROOM
49	HOTEL ROOM
50	HOTEL ROOM
51	HOTEL ROOM
52	HOTEL ROOM
53	HOTEL ROOM
54	HOTEL ROOM
55	HOTEL ROOM
56	HOTEL ROOM
57	HOTEL ROOM
58	HOTEL ROOM
59	HOTEL ROOM
60	HOTEL ROOM
61	HOTEL ROOM
62	HOTEL ROOM
63	HOTEL ROOM
64	HOTEL ROOM
65	HOTEL ROOM
66	HOTEL ROOM
67	HOTEL ROOM
68	HOTEL ROOM
69	HOTEL ROOM
70	HOTEL ROOM
71	HOTEL ROOM
72	HOTEL ROOM
73	HOTEL ROOM
74	HOTEL ROOM
75	HOTEL ROOM
76	HOTEL ROOM
77	HOTEL ROOM
78	HOTEL ROOM
79	HOTEL ROOM
80	HOTEL ROOM
81	HOTEL ROOM
82	HOTEL ROOM
83	HOTEL ROOM
84	HOTEL ROOM
85	HOTEL ROOM
86	HOTEL ROOM
87	HOTEL ROOM
88	HOTEL ROOM
89	HOTEL ROOM
90	HOTEL ROOM
91	HOTEL ROOM
92	HOTEL ROOM
93	HOTEL ROOM
94	HOTEL ROOM
95	HOTEL ROOM
96	HOTEL ROOM
97	HOTEL ROOM
98	HOTEL ROOM
99	HOTEL ROOM
100	HOTEL ROOM

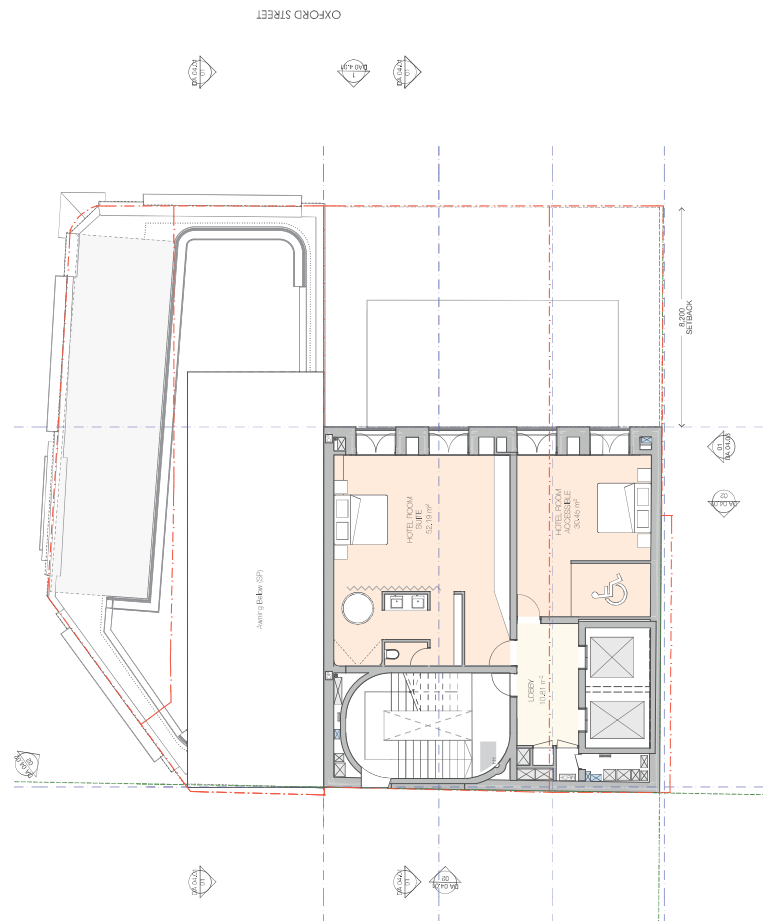
REVISION

NO.	DATE	DESCRIPTION
01	7/14/22	DATE
02		SCALE
03	03.02.01	LEVEL 2 + LEVEL 3
04		PHASE
05		PROJECT
06		CLIENT
07		ARCHITECT
08		ENGINEER
09		CONTRACTOR
10		OWNER

PROJECT INFORMATION

Project Name: TOWER SQUARE
 Address: 191-199, 201 Oxford St, Doolough Park, 2010
 Client: NEESON MURCUTT ARCHITECTS PTY LTD
 Architect: NEESON MURCUTT ARCHITECTS PTY LTD
 Engineer: NEESON MURCUTT ARCHITECTS PTY LTD
 Contractor: NEESON MURCUTT ARCHITECTS PTY LTD
 Owner: NEESON MURCUTT ARCHITECTS PTY LTD

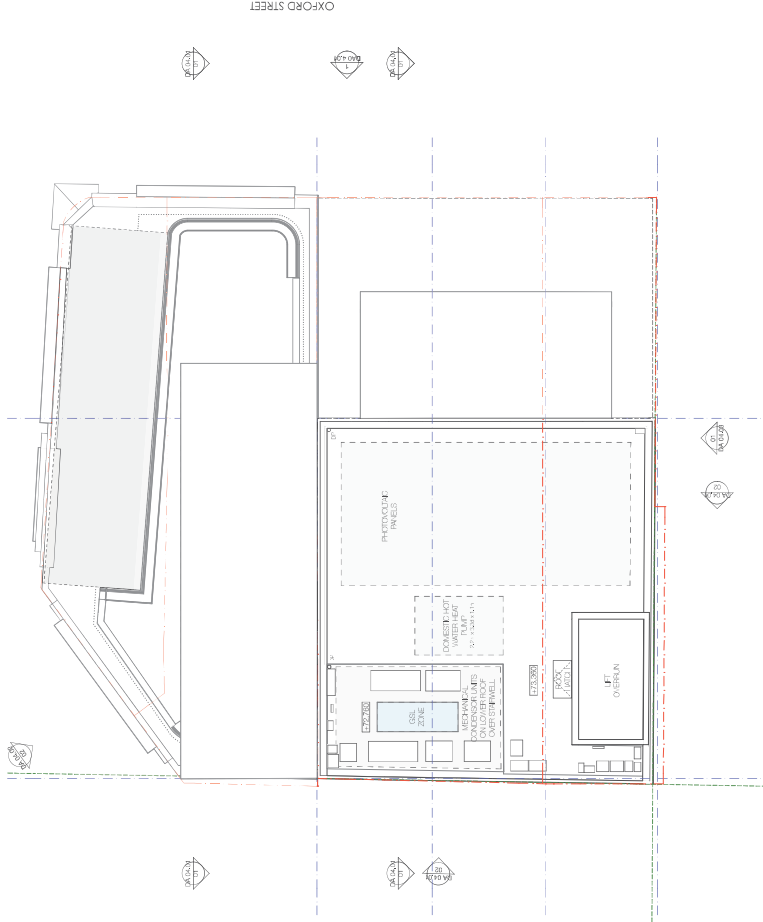
DATE 7/14/22
SCALE 1:100 @A1
PHASE DA
PROJECT LEVEL 2 + LEVEL 3
CLIENT NEESON MURCUTT ARCHITECTS PTY LTD
ARCHITECT NEESON MURCUTT ARCHITECTS PTY LTD
ENGINEER NEESON MURCUTT ARCHITECTS PTY LTD
CONTRACTOR NEESON MURCUTT ARCHITECTS PTY LTD
OWNER NEESON MURCUTT ARCHITECTS PTY LTD



1 Level 4 (Hotel)
1:100

- USING:
 - 100% RECYCLED PAPER
 - 100% RECYCLED INK
 - 100% RECYCLED GLASS
 - 100% RECYCLED METAL
 - 100% RECYCLED PLASTIC
 - 100% RECYCLED RUBBER
 - 100% RECYCLED STEEL
 - 100% RECYCLED WOOD
- 100% RECYCLED PAPER
- 100% RECYCLED INK
- 100% RECYCLED GLASS
- 100% RECYCLED METAL
- 100% RECYCLED PLASTIC
- 100% RECYCLED RUBBER
- 100% RECYCLED STEEL
- 100% RECYCLED WOOD

- USING:
 - 100% RECYCLED PAPER
 - 100% RECYCLED INK
 - 100% RECYCLED GLASS
 - 100% RECYCLED METAL
 - 100% RECYCLED PLASTIC
 - 100% RECYCLED RUBBER
 - 100% RECYCLED STEEL
 - 100% RECYCLED WOOD
- 100% RECYCLED PAPER
- 100% RECYCLED INK
- 100% RECYCLED GLASS
- 100% RECYCLED METAL
- 100% RECYCLED PLASTIC
- 100% RECYCLED RUBBER
- 100% RECYCLED STEEL
- 100% RECYCLED WOOD



2 Roof Plan
1:100

- USING:
 - 100% RECYCLED PAPER
 - 100% RECYCLED INK
 - 100% RECYCLED GLASS
 - 100% RECYCLED METAL
 - 100% RECYCLED PLASTIC
 - 100% RECYCLED RUBBER
 - 100% RECYCLED STEEL
 - 100% RECYCLED WOOD
- 100% RECYCLED PAPER
- 100% RECYCLED INK
- 100% RECYCLED GLASS
- 100% RECYCLED METAL
- 100% RECYCLED PLASTIC
- 100% RECYCLED RUBBER
- 100% RECYCLED STEEL
- 100% RECYCLED WOOD

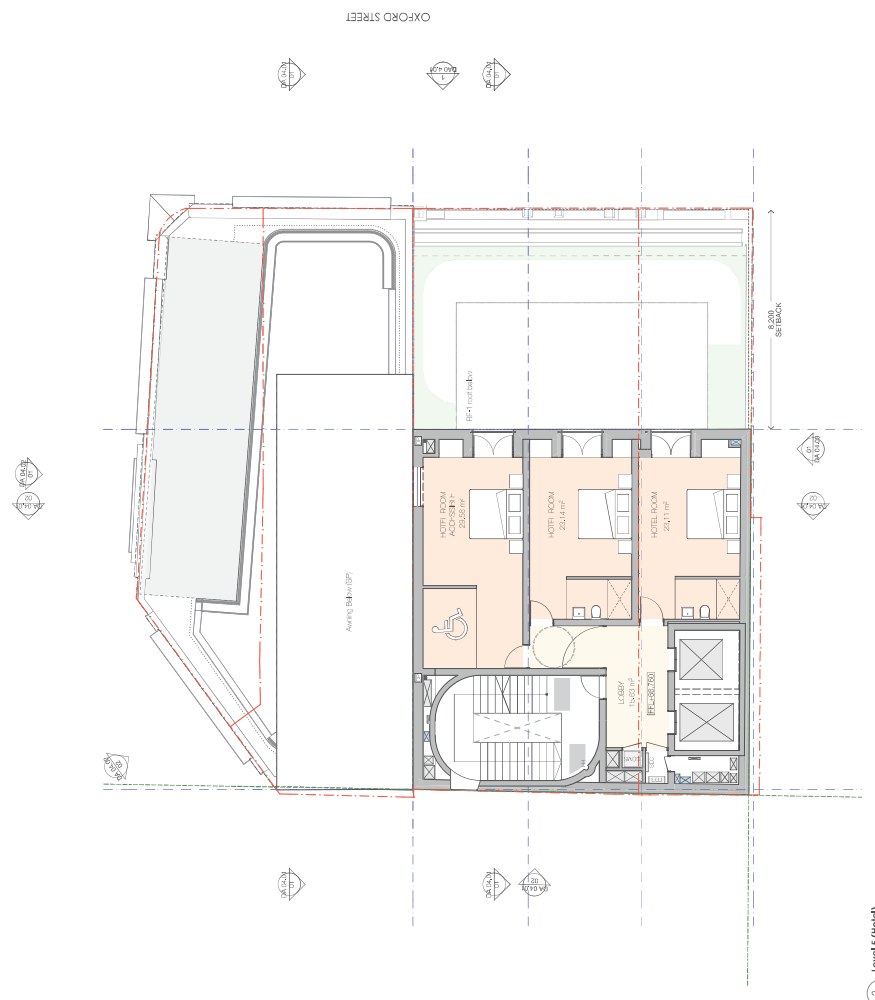
- USING:
 - 100% RECYCLED PAPER
 - 100% RECYCLED INK
 - 100% RECYCLED GLASS
 - 100% RECYCLED METAL
 - 100% RECYCLED PLASTIC
 - 100% RECYCLED RUBBER
 - 100% RECYCLED STEEL
 - 100% RECYCLED WOOD
- 100% RECYCLED PAPER
- 100% RECYCLED INK
- 100% RECYCLED GLASS
- 100% RECYCLED METAL
- 100% RECYCLED PLASTIC
- 100% RECYCLED RUBBER
- 100% RECYCLED STEEL
- 100% RECYCLED WOOD

NEESON MURCUTT + NEILLE
 NEESON MURCUTT ARCHITECTS PTY LTD
 11-9 ROBINET PLACE PTB1 1E 8203 870
 NORTHWOOD ARCHITECT ARCHITECTURE NO. 602

Topex Square
 19-195, 197-199, 201 Oxford St, Darlinghurst NSW, 2010

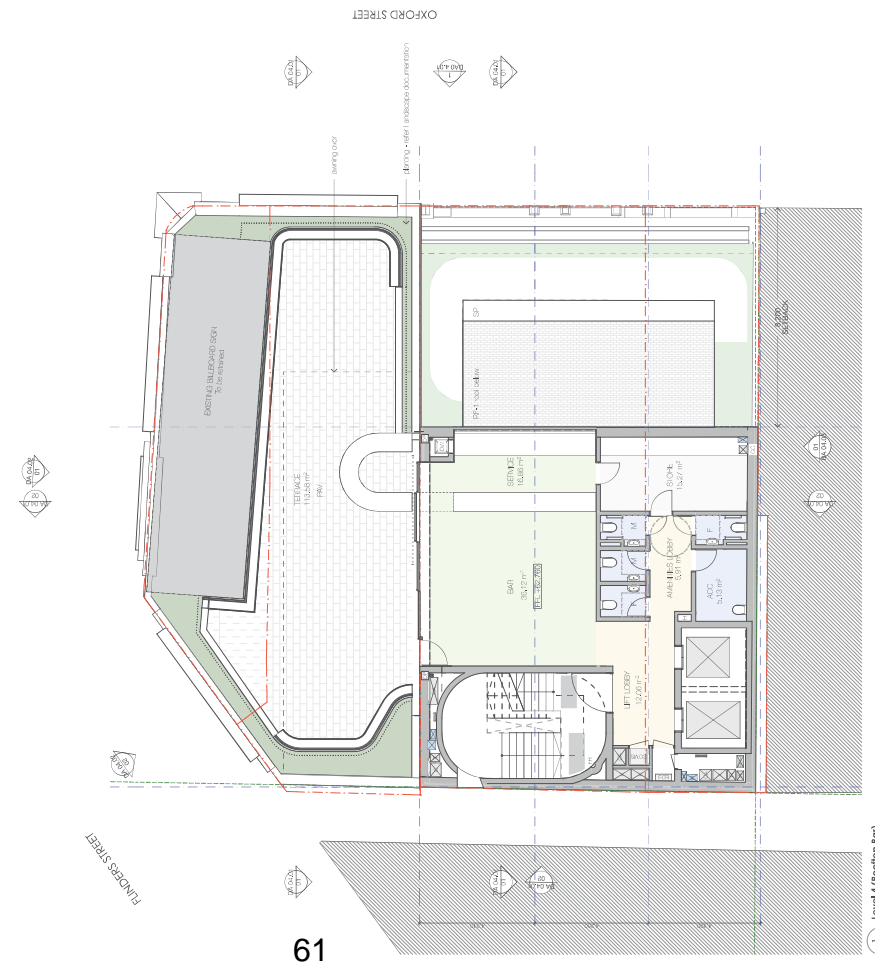
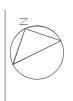
NO. 03.04.01 TITLE LEVEL 4 + ROOF DATE 7/14/22
 SCALE 1:100 @A1
 PHASE DA

Copyright in all documents and drawings prepared by NEESON MURCUTT ARCHITECTS and in any work executed from those documents and drawings shall remain the property of, or an assignee of, NEESON MURCUTT ARCHITECTS PTY LTD



2 level 5 (total)
1:100

ISSUE	DATE	REVISION
01	7/4/22	DATE



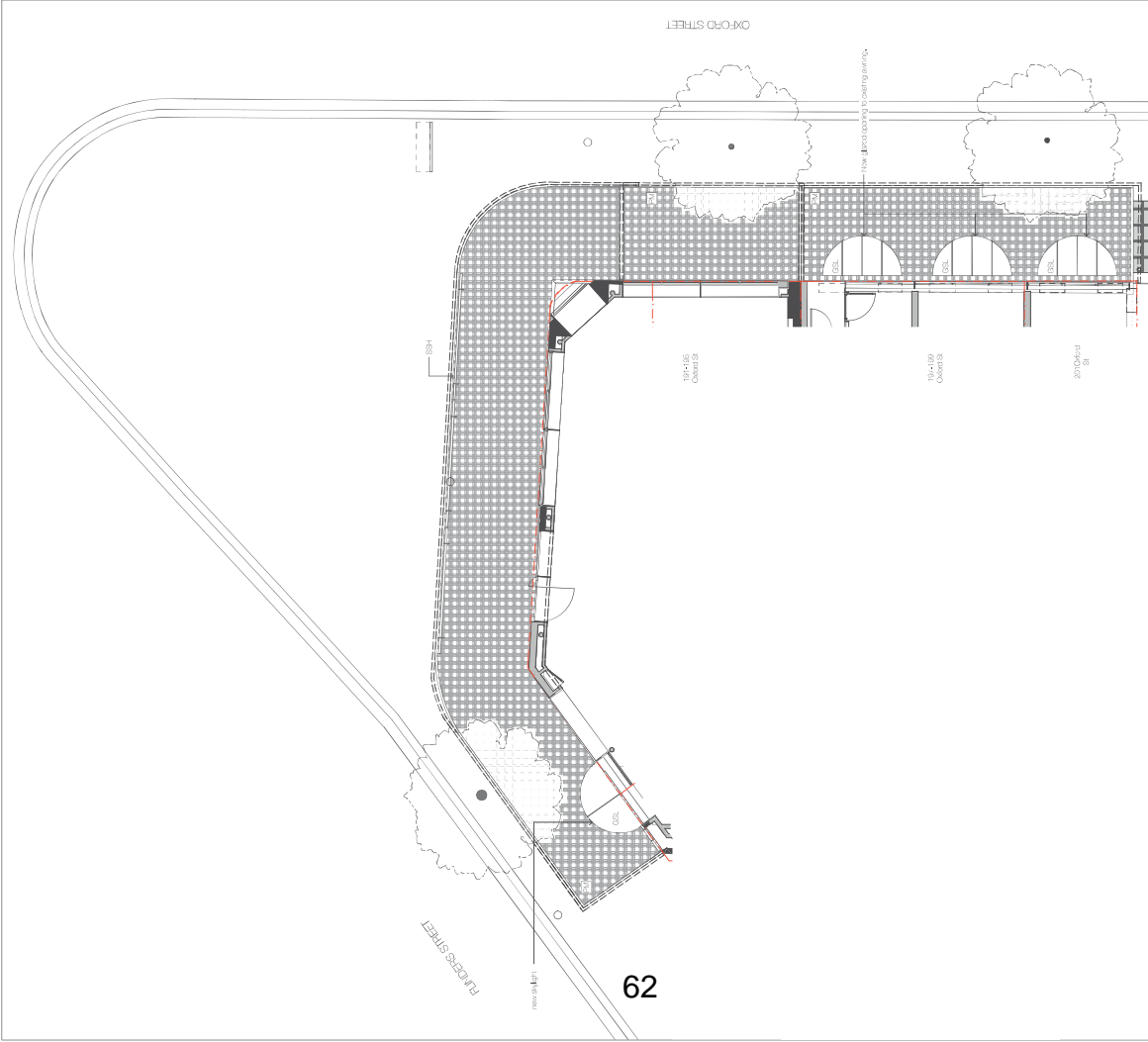
1 level 4 (Recallup Bar)
1:100

USINGS

01	CONCRETE
02	CONCRETE
03	CONCRETE
04	CONCRETE
05	CONCRETE
06	CONCRETE
07	CONCRETE
08	CONCRETE
09	CONCRETE
10	CONCRETE
11	CONCRETE
12	CONCRETE
13	CONCRETE
14	CONCRETE
15	CONCRETE
16	CONCRETE
17	CONCRETE
18	CONCRETE
19	CONCRETE
20	CONCRETE
21	CONCRETE
22	CONCRETE
23	CONCRETE
24	CONCRETE
25	CONCRETE
26	CONCRETE
27	CONCRETE
28	CONCRETE
29	CONCRETE
30	CONCRETE
31	CONCRETE
32	CONCRETE
33	CONCRETE
34	CONCRETE
35	CONCRETE
36	CONCRETE
37	CONCRETE
38	CONCRETE
39	CONCRETE
40	CONCRETE
41	CONCRETE
42	CONCRETE
43	CONCRETE
44	CONCRETE
45	CONCRETE
46	CONCRETE
47	CONCRETE
48	CONCRETE
49	CONCRETE
50	CONCRETE
51	CONCRETE
52	CONCRETE
53	CONCRETE
54	CONCRETE
55	CONCRETE
56	CONCRETE
57	CONCRETE
58	CONCRETE
59	CONCRETE
60	CONCRETE
61	CONCRETE
62	CONCRETE
63	CONCRETE
64	CONCRETE
65	CONCRETE
66	CONCRETE
67	CONCRETE
68	CONCRETE
69	CONCRETE
70	CONCRETE
71	CONCRETE
72	CONCRETE
73	CONCRETE
74	CONCRETE
75	CONCRETE
76	CONCRETE
77	CONCRETE
78	CONCRETE
79	CONCRETE
80	CONCRETE
81	CONCRETE
82	CONCRETE
83	CONCRETE
84	CONCRETE
85	CONCRETE
86	CONCRETE
87	CONCRETE
88	CONCRETE
89	CONCRETE
90	CONCRETE
91	CONCRETE
92	CONCRETE
93	CONCRETE
94	CONCRETE
95	CONCRETE
96	CONCRETE
97	CONCRETE
98	CONCRETE
99	CONCRETE
100	CONCRETE

USINGS

01	CONCRETE
02	CONCRETE
03	CONCRETE
04	CONCRETE
05	CONCRETE
06	CONCRETE
07	CONCRETE
08	CONCRETE
09	CONCRETE
10	CONCRETE
11	CONCRETE
12	CONCRETE
13	CONCRETE
14	CONCRETE
15	CONCRETE
16	CONCRETE
17	CONCRETE
18	CONCRETE
19	CONCRETE
20	CONCRETE
21	CONCRETE
22	CONCRETE
23	CONCRETE
24	CONCRETE
25	CONCRETE
26	CONCRETE
27	CONCRETE
28	CONCRETE
29	CONCRETE
30	CONCRETE
31	CONCRETE
32	CONCRETE
33	CONCRETE
34	CONCRETE
35	CONCRETE
36	CONCRETE
37	CONCRETE
38	CONCRETE
39	CONCRETE
40	CONCRETE
41	CONCRETE
42	CONCRETE
43	CONCRETE
44	CONCRETE
45	CONCRETE
46	CONCRETE
47	CONCRETE
48	CONCRETE
49	CONCRETE
50	CONCRETE
51	CONCRETE
52	CONCRETE
53	CONCRETE
54	CONCRETE
55	CONCRETE
56	CONCRETE
57	CONCRETE
58	CONCRETE
59	CONCRETE
60	CONCRETE
61	CONCRETE
62	CONCRETE
63	CONCRETE
64	CONCRETE
65	CONCRETE
66	CONCRETE
67	CONCRETE
68	CONCRETE
69	CONCRETE
70	CONCRETE
71	CONCRETE
72	CONCRETE
73	CONCRETE
74	CONCRETE
75	CONCRETE
76	CONCRETE
77	CONCRETE
78	CONCRETE
79	CONCRETE
80	CONCRETE
81	CONCRETE
82	CONCRETE
83	CONCRETE
84	CONCRETE
85	CONCRETE
86	CONCRETE
87	CONCRETE
88	CONCRETE
89	CONCRETE
90	CONCRETE
91	CONCRETE
92	CONCRETE
93	CONCRETE
94	CONCRETE
95	CONCRETE
96	CONCRETE
97	CONCRETE
98	CONCRETE
99	CONCRETE
100	CONCRETE



62

1 Awaiting RCP

- confirm all dimensions and levels
- confirm all materials and finishes
- confirm all structural and foundation details
- confirm all services and utilities
- confirm all external works
- confirm all landscaping and planting
- confirm all furniture and fixtures
- confirm all signage and wayfinding
- confirm all safety and security measures
- confirm all accessibility requirements
- confirm all sustainability and green building goals
- confirm all budget and cost constraints
- confirm all timeline and program of works
- confirm all risk management and contingency plans
- confirm all stakeholder communication and engagement
- confirm all legal and regulatory requirements
- confirm all insurance and liability coverage
- confirm all quality control and assurance processes
- confirm all project closure and handover procedures

- 100mm concrete
- 150mm concrete
- 200mm concrete
- 250mm concrete
- 300mm concrete
- 350mm concrete
- 400mm concrete
- 450mm concrete
- 500mm concrete
- 550mm concrete
- 600mm concrete
- 650mm concrete
- 700mm concrete
- 750mm concrete
- 800mm concrete
- 850mm concrete
- 900mm concrete
- 950mm concrete
- 1000mm concrete
- 1050mm concrete
- 1100mm concrete
- 1150mm concrete
- 1200mm concrete
- 1250mm concrete
- 1300mm concrete
- 1350mm concrete
- 1400mm concrete
- 1450mm concrete
- 1500mm concrete
- 1550mm concrete
- 1600mm concrete
- 1650mm concrete
- 1700mm concrete
- 1750mm concrete
- 1800mm concrete
- 1850mm concrete
- 1900mm concrete
- 1950mm concrete
- 2000mm concrete

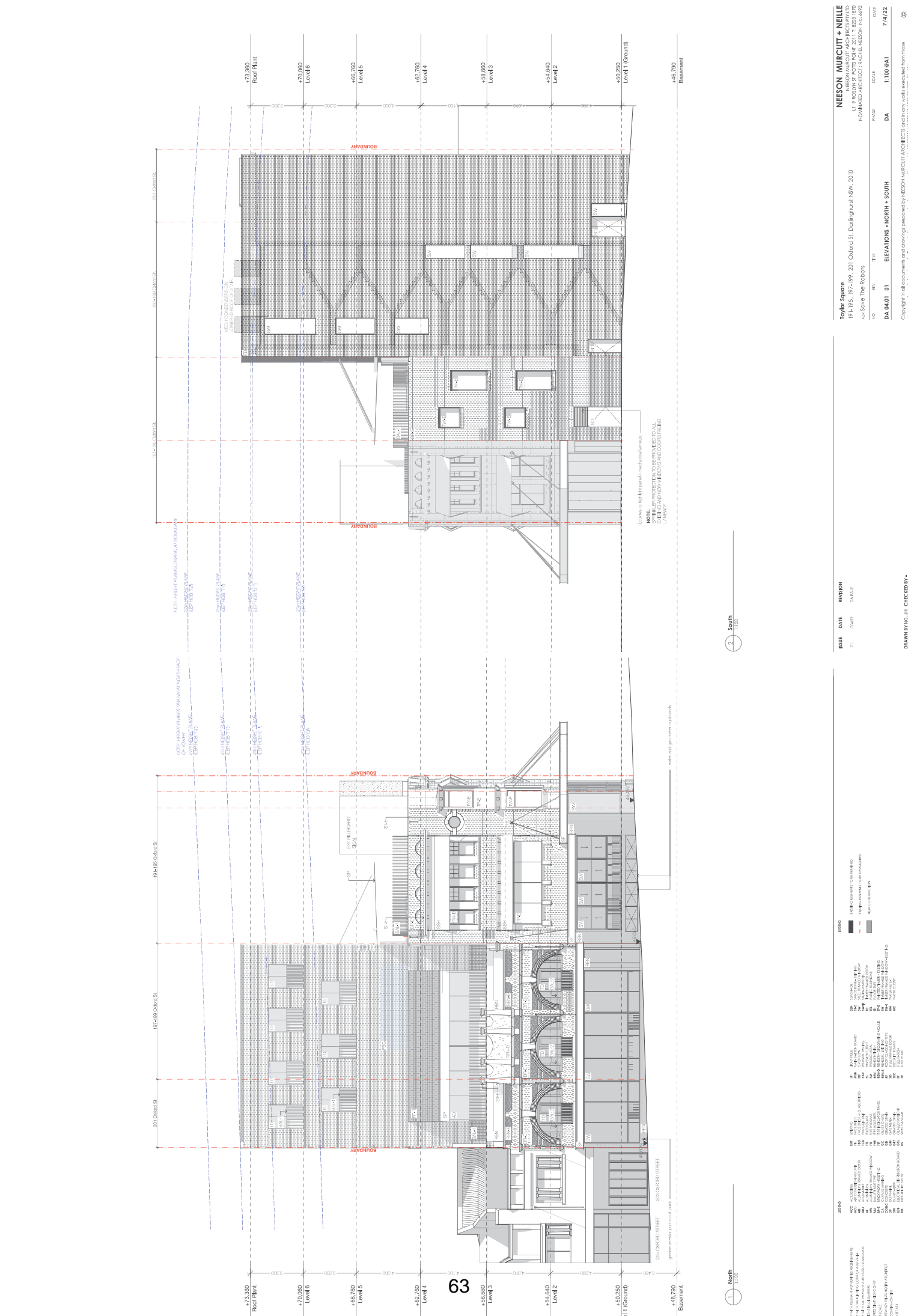
ISSUE	DATE	REVISION
01	7/4/22	DATE



Taylor Square
 19-195, 197-199, 201 Oxford St, Dalfinghast NSW, 2010
 NEESON MURCUTT ARCHITECTS PTY LTD
 11, 9 ROYAL PALS PLACE, 2011, NSW 1590
 NSW ARCHITECT NO. 12012, NSW REG. NO. 692

NO. REV. TITLE SCALE DATE
 DA 03.05 01 Awaiting RCP DA 1:100 @A1 7/4/22

Copyright in all documents and drawings prepared by NEESON MURCUTT ARCHITECTS or in any work executed from those documents and drawings shall remain the property of, or an creation vest in NEESON MURCUTT ARCHITECTS PTY LTD ©



63



NO	REV	DATE	BY	SCALE	DATE
DA 04.01	01	7/14/22	ELEVATIONS - NORTH + SOUTH	1:100 @ A1	7/14/22

ISSUE	DATE	REVISION
01	7/14/22	DATE

TOPOGRAPHY

- EXISTING TOPOGRAPHY
- PROPOSED TOPOGRAPHY

LEVELS

- ROOF FLAT (+73,900)
- FLOOR SLAB (+70,900)
- LEVEL 5 (+66,760)
- LEVEL 4 (+62,760)
- LEVEL 3 (+58,660)
- LEVEL 2 (+54,640)
- LEVEL 1 (+50,250)
- BASEMENT (+46,790)

LEVELS

- ROOF FLAT (+73,900)
- FLOOR SLAB (+70,900)
- LEVEL 5 (+66,760)
- LEVEL 4 (+62,760)
- LEVEL 3 (+58,660)
- LEVEL 2 (+54,640)
- LEVEL 1 (+50,250)
- BASEMENT (+46,790)

LEVELS

- ROOF FLAT (+73,900)
- FLOOR SLAB (+70,900)
- LEVEL 5 (+66,760)
- LEVEL 4 (+62,760)
- LEVEL 3 (+58,660)
- LEVEL 2 (+54,640)
- LEVEL 1 (+50,250)
- BASEMENT (+46,790)

LEVELS

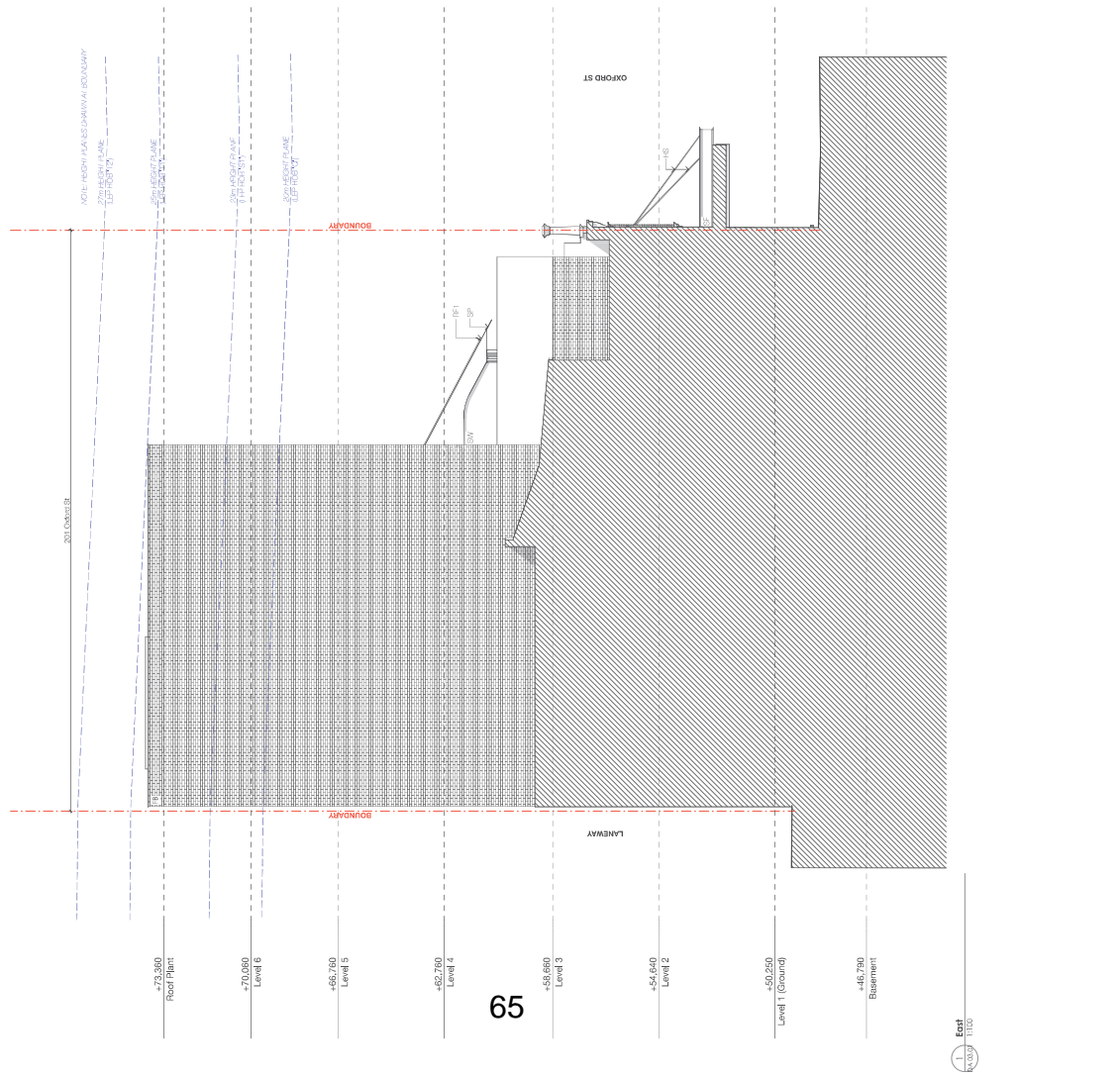
- ROOF FLAT (+73,900)
- FLOOR SLAB (+70,900)
- LEVEL 5 (+66,760)
- LEVEL 4 (+62,760)
- LEVEL 3 (+58,660)
- LEVEL 2 (+54,640)
- LEVEL 1 (+50,250)
- BASEMENT (+46,790)

LEVELS

- ROOF FLAT (+73,900)
- FLOOR SLAB (+70,900)
- LEVEL 5 (+66,760)
- LEVEL 4 (+62,760)
- LEVEL 3 (+58,660)
- LEVEL 2 (+54,640)
- LEVEL 1 (+50,250)
- BASEMENT (+46,790)

LEVELS

- ROOF FLAT (+73,900)
- FLOOR SLAB (+70,900)
- LEVEL 5 (+66,760)
- LEVEL 4 (+62,760)
- LEVEL 3 (+58,660)
- LEVEL 2 (+54,640)
- LEVEL 1 (+50,250)
- BASEMENT (+46,790)



65



REVISION	DATE	BY	CHECKED BY
01	7/1/20	DA	NE

NO.	DESCRIPTION
1	Roof Plant
2	Level 6
3	Level 5
4	Level 4
5	Level 3
6	Level 2
7	Level 1 (Ground)
8	Basement

Taylor Square
19-195, 197-199, 201 Oxford St, Darlinghurst NSW, 2010

NEESON MURCUTT + NEILLE
NEESON MURCUTT ARCHITECTS PTY LTD
111 KENNEDY POINT ROAD, NEWCASTLE NSW 1608
NO. 602

DA 04.03.01 ELEVATIONS - EAST

DATE: 7/1/20

SCALE: 1:100 @A1

PHASE: DA

PROJECT: re-Save the Robots

CLIENT: re-Save the Robots

©

Copyright in all documents and drawings prepared by NEESON MURCUTT ARCHITECTS and in any work executed from those documents and drawings shall remain the property of, or an assignment vest in NEESON MURCUTT ARCHITECTS PTY LTD

